

# ADT Carbon Monoxide Alarm

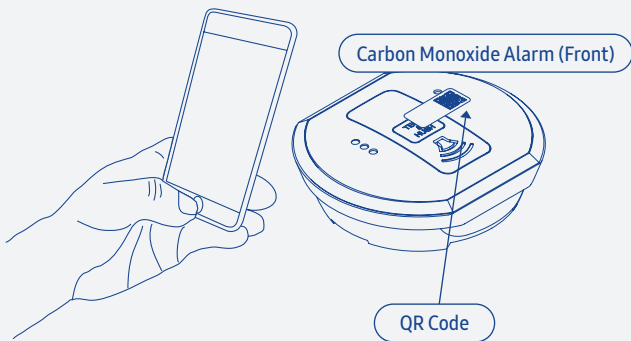
## Setup Guide



## A Setup

1. Take the ADT Carbon Monoxide Alarm to where you intend to mount it after setup. 2.
- Make sure you are within 350 feet from the ADT Security Hub. (Exact range depends on your home's construction, the environment, the position of the ADT Security Hub, and the position and number of other connected devices.) 3.
  - Make sure that your ADT Security Hub is disarmed before connecting a new device.
  - Make sure that you only setup one new device at a time.
  - Do not remove the battery tab until you are ready to set up the detector.

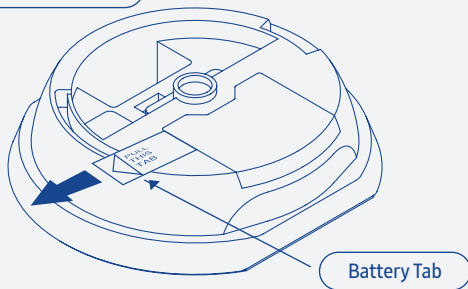
2. Use the SmartThings app on your smartphone to select the "My Home" tab. Select "Things", and then "Add a Thing".
3. Use the SmartThings app to scan the QR code on the front of the alarm and then follow the on-screen instructions to complete setup.



## Setup

4. Remove the tab on the carbon monoxide alarm marked "Pull This Tab".

Carbon Monoxide Alarm (Back)



5. Remove the QR code from the front of the alarm and attach it inside the ADT Security Hub User Guide for future reference.

## **B** Placement

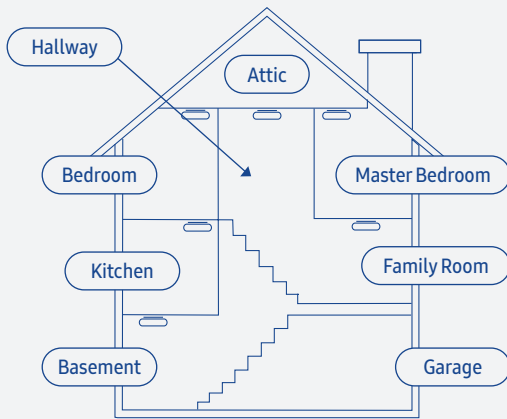
Install the ADT Carbon Monoxide Alarm in a place where the alarm can be heard easily. Ideally, a carbon monoxide alarm should be installed in:

- Every room containing a fuel burning appliance.
- Within 10 feet of a sleeping area.
- On every floor of the building.

**WARNING:** This product is intended for use in ordinary indoor locations of family living units. It is not designed to measure compliance with Occupational Safety and Health Administration (OSHA) commercial or industrial standards.

## Placement

Carbon monoxide alarm suggested Locations:



Do  
of t

•

•

•

•

•

•

•

**Do not place the ADT Carbon Monoxide Alarm in any of the following areas:**

- In the immediate vicinity of a cooking appliance (keep it at least 5 feet away from it).
- Outside the building.
- In an enclosed space, e. g. in or below a cupboard.
- In a damp or humid area.
- Directly above a sink or cooker.
- Next to a door, window, air vent, or anywhere it could be affected by drafts.
- Next to an extractor fan.

## Placement

- Over heat sources such as radiators or hot air vents.
- Where it would be obstructed, e.g. by curtains or furniture.
- In an area where the temperature could be below  $-50^{\circ}\text{F}$  or above  $104^{\circ}\text{F}$ .
- Where it could be easily knocked or damaged, or accidentally turned off or removed.
- Near paint, thinners, solvent fumes, or air fresheners.
- Where dirt or dust could block the detector.
- In a bathroom or other areas where it may be exposed to water splashes, dripping or condensation, e.g. above an electric kettle.

If lo  
wit

•

•

•

•



### If locating the ADT Carbon Monoxide Alarm in a room with a fuel burning appliance:

- If mounted on a wall, it should be located at a height greater than the height of any door or window but still be at least 5.9 inches from the ceiling.
- If mounted on the ceiling, it should be at least 12 inches from any wall or light fitting.
- The alarm should be a horizontal distance of between 3.28 and 9.84 feet from the potential carbon monoxide source.
- In rooms with sloped ceilings, the alarm should be located on the high side of the room.

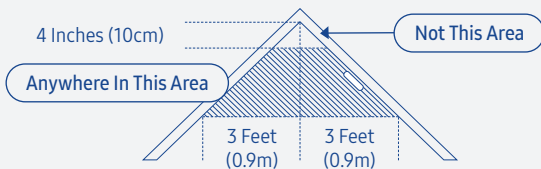
## Placement

- If there is a partition in the room, the alarm should be located on the same side of the partition as the potential source.

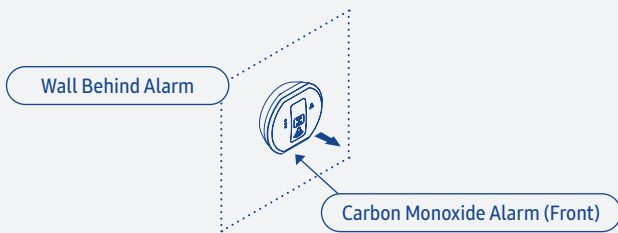
### **If locating the ADT Carbon Monoxide Alarm in a bedroom or in rooms remote from a fuel burning appliance:**

- Mount the alarm within 10 feet of the occupants.
- Always make sure it is possible to view the three light indicators when in the vicinity of the alarm.

## Carbon Monoxide Alarm Ceiling Placement:

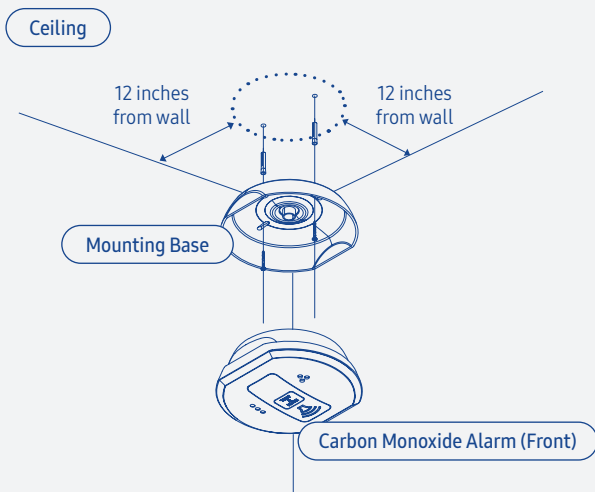


## Carbon Monoxide Alarms should face out in this position:



## C Mounting

1. Install the mounting base using the two screws and anchors provided.

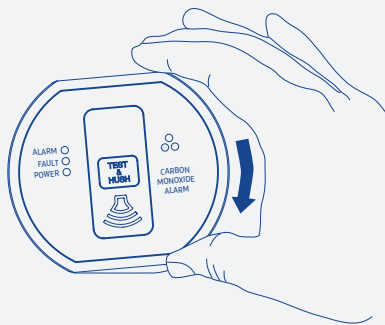


2.

3.

## Mounting

2. Fit the alarm inside the base by aligning it over the base, then turn the alarm in a clockwise direction until it clicks into place. The three LEDs will flash while the alarm powers up.



3. Test the alarm after completing the installation.

## D Testing

Test the ADT Carbon Monoxide Alarm weekly by pressing and holding the test button for a few seconds while the ADT Security Hub is in Walk Test Mode. See the ADT Security Hub User Guide for more details.

Replace the alarm when the “Replace unit by” date has been reached (check label on the side of the device).

**Note:** If you have an ADT professional monitoring service activated, additional testing is required when you connect new devices. Follow the on-screen instructions in the SmartThings app to complete testing.

**Important:** This carbon monoxide alarm must be tested and maintained weekly. This device is designed to protect individuals from the acute effects of carbon monoxide exposure. It will not fully safeguard individuals with specific medical conditions. If in doubt, consult a medical

## Testing

g  
practitioner. Individuals with medical problems may consider using warning devices which provide audible and visual signals for carbon monoxide concentrations under 30 ppm.

e  
ect

ect

al

## **E** Troubleshooting

**If the alarm does not sound when you press the test button:**

1. Make sure the batteries are properly inserted and then wait 15 seconds.
2. Hold button down firmly for at least 5 seconds.
3. Check the alarm is secured correctly on the mounting plate.
4. Replace batteries.

To

If th  
Sec

1.

2.

3.

4.

5.

If yo  
Mo  
Sup



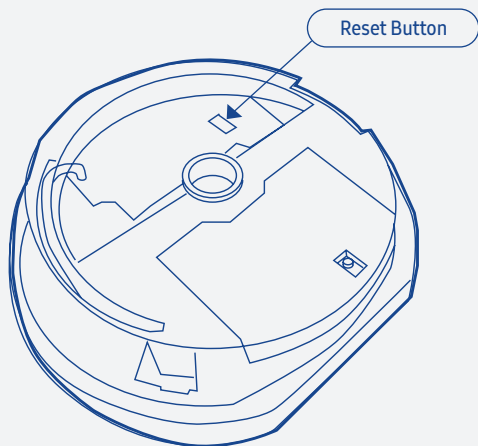
## To reset the alarm:

If the alarm did not pair successfully with the ADT Security Hub, follow these instructions to reset it:

1. Press and release the test button twice.
2. Press and hold the button until the red LED starts blinking quickly.
3. Continue to press and hold the button until the red LED turns solid.
4. Release the button and after 5 seconds the red LED will begin to blink slowly.
5. Use the SmartThings app to complete setup.

If you're still having trouble connecting the ADT Carbon Monoxide Alarm, please visit [SmartThings.com](https://www.smartthings.com) **Support-ADT** for assistance.

## Troubleshooting



F

Wh  
dar  
ligh  
car

Al

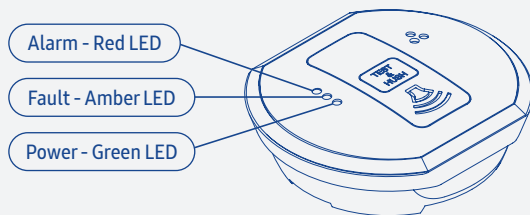
Fa

Po

The  
diff  
tim  
tur

## F Use

When the ADT Carbon Monoxide Alarm detects potentially dangerous levels of carbon monoxide, it flashes the red light immediately and then sounds a loud alarm if the carbon monoxide persists.



The below table shows how the alarm reacts to different levels of carbon monoxide gas and exposure time. At higher levels of carbon monoxide, the alarm turns on sooner.

## Use

The rate of flashing of the red light indicates the level of carbon monoxide. **If your alarm sounds, follow the instructions in the “What To Do” column.**

**Caution:** The alarm only indicates the presence of carbon monoxide gas in the area where the ADT Carbon Monoxide Alarm is located. Carbon monoxide gas may be present in other areas.

This carbon monoxide alarm is designed to detect carbon monoxide gas from ANY source of combustion. It is not designed to detect smoke, fire or any other gas.

**WARNING:** Actuation of your carbon monoxide alarm indicates the presence of carbon monoxide (CO) which can **KILL YOU.**

The following symptoms are related to CARBON MONOXIDE POISONING and are to be discussed with ALL members of the household:

- Mild Exposure: Slight headache, nausea, vomiting, fatigue (often described as flu-like symptoms).
- Medium Exposure: Severe throbbing headache, drowsiness, confusion, fast heart rate.
- Extreme Exposure: Unconsciousness, convulsions, cardiorespiratory failure, death.

Many cases of reported CARBON MONOXIDE POISONING indicate that while victims are aware they are not well, they become so disoriented they are unable to save themselves by either exiting the building or calling for assistance. Young children and household pets are typically the first affected.

## Alarms

### What You Hear / See

---

No beeping, red LED  
blinking once every 3 seconds.

---

Siren beeping, red LED  
blinking once every 3 seconds.

---

No beeping, red LED  
blinking twice every 3 seconds.

---

Siren beeping, red LED  
blinking twice every 3 seconds.

---

Siren beeping, red LED  
blinking three times every 3  
seconds.

### What It Means

---

**Low** levels of carbon monoxide  
detected.

---

**Low** levels of carbon monoxide  
detected for 60+ minutes.

---

**Moderate** levels of carbon  
monoxide detected.

---

**Moderate** levels of carbon  
monoxide detected for 10+ minutes.

---

**Critical** levels of carbon  
monoxide detected for 2+ minutes.

### Wh

---

Ope

---

Ope  
the

---

Ope  
carb

---

Ope  
carb

---

1. Im  
2. C  
3. D  
resp  
you

## What To Do

---

Open a window or door to get fresh air.

---

Open a window or door to get fresh air. Press the Hush button to mute the alarm.

---

Open a window or door to get fresh air. Investigate the source of the carbon monoxide.

---

Open a window or door to get fresh air. Investigate the source of the carbon monoxide.

---

1. Immediately move to fresh air.
2. Call your fire department or 911.
3. DO NOT re-enter the premises until the emergency services responders have arrived, the premises have been aired out and your alarm remains in its normal condition.

## Maintenance

### What You Hear / See

---

No beeping.

---

1 Beep every minute.  
Amber LED flash once every  
48 seconds, green LED off.

---

2 Beeps every minute.  
Amber LED flash twice every  
48 seconds, green LED off.

---

3 Beeps every minute.  
Amber LED flash three times  
every 48 seconds, green LED off.

### What It Means

---

Normal operation.

---

Low batteries.

---

Carbon monoxide alarm  
error.

---

Product expired  
(10 years from the date of  
manufacture indicated on the  
alarm).



Use

## What To Do

---

No action.

---

Replace batteries.

---

Replace unit with same brand.

---

Replace unit with same brand.

## **G** Suggestions

The ADT Carbon Monoxide Alarm monitors for carbon monoxide in your home. When carbon monoxide is detected, the alarm sounds and a notification is sent to your ADT Security Hub.

Your ADT Security Hub can then send an alert to your smartphone, automate connected devices, or initiate optional ADT professional monitoring services (additional fees apply).

## Suggestions

There are many ways you can use an ADT Carbon Monoxide Alarm in your home:

- Put one in a room containing a fuel-burning appliance and set it to initiate optional ADT professional monitoring services when carbon monoxide is detected in your home (additional fees apply).
- Put one in your bedroom and set it to turn on connected lights when carbon monoxide is detected.
- Put one in your hallway and set it to turn off a connected thermostat to avoid spreading carbon monoxide through your home.

## Suggestions

**Note:** To ensure proper functioning, all connected devices must be configured correctly. This alarm is not designed to be interconnected with other manufacturers' products unless otherwise specified.

Visit [SmartThings.com/Welcome](https://SmartThings.com/Welcome) for more ideas, tips, and special offers.

H

Sm  
dev  
and  
and  
wit

Loc  
you  
**Sm**  
dev

## H Works With SmartThings

SmartThings works with a wide range of connected devices, including lights, cameras, locks, thermostats, and sensors. It also works with the **Google Assistant** and **Amazon Alexa** so you can control your smart home with voice commands.

Look for the **Works with SmartThings** label next time you're buying a connected device for your home, or visit **SmartThings.com** to see the full list of compatible devices.







SmartThings, Inc., 665 Clyde Ave, Mountain View, CA 94043, USA. Information in this document is subject to change without notice. Copyright 2017 SmartThings, Inc. All rights reserved. ADT and the ADT logo are marks and/or registered marks of ADT. Unauthorized use is strictly prohibited. Revised 06/17.

P/N 10015712B