

## INSTALLATION AND SETUP GUIDE

### GENERAL INFORMATION

The 5834-4 key transmitter is a portable wireless transmitter for use only with wireless alarm systems that support 5800 Series receivers (ex. VISTA series, LYNX PLUS, LYNX Touch).

- Buttons are typically used for arming and disarming, but can be programmed for any appropriate zone response.
- A button must be pressed and held until the LED begins to flash to activate a button function. This press and hold feature minimizes the possibility of accidental transmissions.
- The factory-installed replaceable lithium battery provides power for up to five (5) years.
- The 5834-4 transmitter provides up to eight (8) functions and has an optional high security (encrypted) mode that sends rolling-code encrypted messaging to the RF receiver.

**High Security Mode Note:** If used in high security mode, must be used with a receiver or control that supports high security mode. i.e., 5881EN, 5883, 6150RF, or 6160RF receiver or LYNXR Series control panel (Rev 13.1 or higher).

### PROGRAMMING

For complete details on how to program the transmitter at the control panel, see the control unit's Installation Instructions. When programming, note the following:

- Each 5834-4 transmitter has two unique serial numbers assigned during manufacture.
- Each button on the unit also has a distinct "loop" number (refer to the Loop Number diagram at right) that you must program into the control panel during installation.
- Assign each button to an individual zone and designate the Input Type as "BR" (Button Type).
- When prompted for the serial number, press and release the appropriate button(s) twice, or, manually enter the serial number at the keypad.

**NOTE:** Serial #2 is one (1) digit higher than serial #1, which is printed on the rear of the transmitter.

### USING HIGH-SECURITY MODE



If used with LYNXR Series controls earlier than Revision 13.1, Standard Mode must be selected.

To use High Security mode, first select High Security mode, then activate it. Activation syncs the keyfob with the security system.

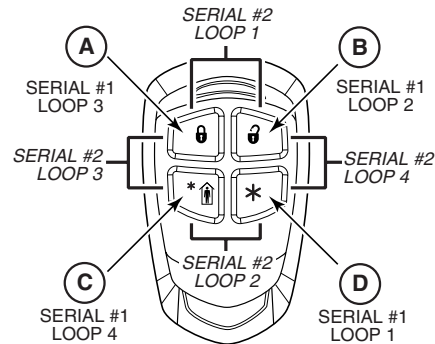
#### 1. Select High Security mode:

Mode	Simultaneously hold down for 5 secs...
High-Security	A - C - D (LED flashes Red when transmitting)
Standard	B - C - D (LED flashes Green when transmitting)

#### 2. Activate High Security Mode: Put the security system into Go/No Go Mode, then press the appropriate set of buttons as follows:

Serial Number	Simultaneously hold down until beeps sound...
1	A - B - C buttons (system beeps twice to confirm)
2	A - B - D buttons (system beeps twice to confirm)

### Loop Numbers for the 5834-4 Keyfob Buttons



#### NOTE

- SERIAL #1 FUNCTIONS ACTIVATE WHEN THE RESPECTIVE BUTTON IS HELD DOWN UNTIL THE LED FLASHES.
- SERIAL #2 FUNCTIONS ACTIVATE WHEN THE TWO RESPECTIVE SERIAL #2 BUTTONS ARE PRESSED AT THE SAME TIME AND HELD DOWN UNTIL THE LED FLASHES.

5834-008-V1

**Using a Button:** To activate a programmed function, press and hold the appropriate key(s) until the LED begins to flash.

### ASSIGNING A WIRELESS KEY TO A USER

- On most control panels, if the wireless key is assigned to arm and disarm the system, you must assign it to a user in order for it to operate. This is accomplished through User Code programming at the control panel. See the control panel's Installation and Setup Guide for specific instructions on programming User Codes. The table below summarizes the procedures.
- If programming arming and disarming functions on both serial numbers, each serial number must be assigned to a separate user.

#### On Vista 32/40/50/50P/100 and up

You must assign a user to the button in order for it to operate.

To assign a user number to the Arm/Disarm button:

- Enter [4-digit User Code] + [8] + [User No.] + [new User Code].
- Answer Yes or No to the "Open/Close Report ?" question.
- Answer Yes to the "RF Button ?" question.
- Enter the zone number assigned to the button.
- Keypad display shows summary of user information.
- Test all functions for proper operation.

#### On Vista-20P/15P/10P/Vista-21iP and variants

You must assign a user to the button in order for it to operate, and must enter a sequence of keystrokes as described below.

**NOTE:** There is a two-second timeout for keystroke commands on Vista P series panels, therefore you must enter the keystrokes as quickly as possible.

- Enter [4-digit Master Code] + [8] + [User Number] + [# 4] + [two digit zone number] assigned to the fob.
- Test all functions for proper operation.

## REPLACING THE BATTERY

The LED will not flash during transmission if the battery is low. Replace the battery as follows.

1. Remove the screw from the case back, then remove the case back.
2. Insert the blade of a small screwdriver under the battery as shown.
3. Twist the screwdriver to release the battery.
4. With the Positive (+) end of a new battery facing UP, insert the battery as shown, sliding it under the gold tab, then pressing down to snap into place.

**IMPORTANT:** Positive (+) end must face up.

Use Maxell CR2032 or Duracell DL2032 lithium battery only.

5. Replace the case back and replace the screw to secure the case.



- Improper installation will result in damage to the battery.
- Do not remove the printed circuit board.

## Failure of Replaceable Batteries

This wireless key has been designed to provide several years of battery life under normal conditions. The expected battery life is a function of the device environment, usage and type. Ambient conditions such as high humidity, high or low temperatures, or large temperature fluctuations may reduce the expected battery life.

If the batteries need to be replaced, this device reports a low battery condition to the control panel as a trouble condition when a button is pressed. In addition the LED will not flash when a button is pressed. However, if the device is unused for a long period of time, it may fail to operate as expected. Regular testing and maintenance will keep the system in good operating condition for the lifetime of the product.

**IMPORTANT!** This wireless key is intended as a convenience to the user and should not be considered as a life safety device. If life safety is important, please select a supervised wireless key (e.g. type 5802MN).

## SPECIFICATIONS

**Unit Dimensions:** 2.25" x 1.25" x 0.5"  
(57mm x 31.75mm x 12.7mm)

**Battery:** 3V, 210mAh, Maxell CR2032, Duracell DL2032

**IC MODEL No. 5834**

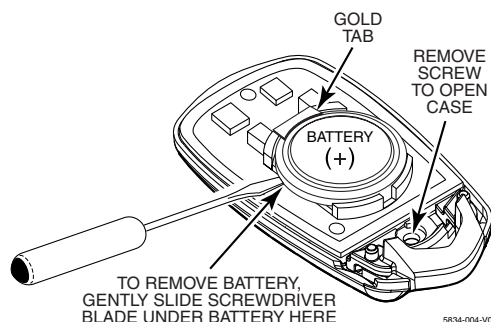


## WARRANTY INFORMATION

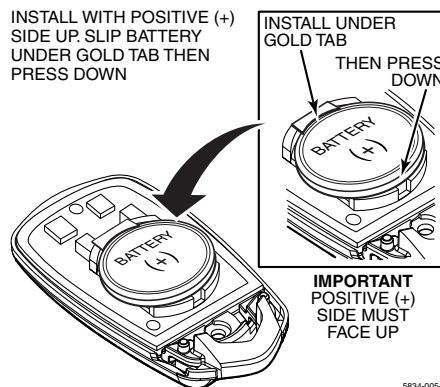
For the latest warranty information, please go to:  
<http://www.security.honeywell.com/hsc/resources/wa/index.html>

REFER TO THE INSTALLATION INSTRUCTIONS FOR THE CONTROL WITH WHICH THIS DEVICE IS USED FOR LIMITATIONS OF THE ENTIRE ALARM SYSTEM.

## Removing the Battery



## Installing the Battery



## FEDERAL COMMUNICATIONS COMMISSION STATEMENTS:

The user shall not make any changes or modifications to the equipment unless authorized by the installation Instructions or User's Manual. Unauthorized changes or modifications could void the user's authority to operate the equipment.

### FCC NOTICE

This device complies with Part 15 of FCC Rules, and RSS 210 of IC. Operation is subject to the following two conditions: (1) This device may not cause harmful interference, and (2) This device must accept any interference received, including interference that may cause undesired operation.

Cet appareil est conforme à la partie 15 des règles de la FCC & de RSS 210 des industries Canada. Son fonctionnement est soumis aux conditions suivantes: (1) Cet appareil ne doit pas causer d'interférences nuisibles. (2) Cet appareil doit accepter toute interférence reçue y compris les interférences causant une réception indésirable.



800-05637V1 11/10 Rev. A

**Honeywell**

2 Corporate Center Drive, Suite 100  
P.O. Box 9040, Melville, NY 11747

Copyright © 2010 Honeywell International Inc.  
[www.honeywell.com/security](http://www.honeywell.com/security)